

FILED
 Date 7/10/17 By RB
 This Survey Consists Of:
 2 sheet(s) Map
 8 page(s) Narrative
JACKSON COUNTY SURVEYOR

ANDREWS PLACE PHASE 2, PHASE 3 & PHASE 4
 (A PLANNED UNIT DEVELOPMENT)

LOCATED IN
 LOT 4, ANDREWS PLACE PHASE 1, A PLANNED UNIT DEVELOPMENT,
 IN THE SOUTHWEST QUARTER OF SECTION 32,
 TOWNSHIP 37 SOUTH, RANGE 2 WEST, W.M.,
 IN THE CITY OF JACKSONVILLE,
 JACKSON COUNTY, OREGON

HOFFBUHR & ASSOCIATES, INC.
 880 GOLF VIEW DRIVE, SUITE 101
 MEDFORD, OREGON 97504
 (541)779-4641

BY: DARRELL L. HUCK PLS NO. 2023
 SCALE: 1 inch = 50' APRIL 10, 2017
 BASIS OF BEARING: SURVEY NO. 7431

- = Set 5/8"x24" iron reinforcing pin with plastic cap stamped "HOFFBUHR & ASSOCIATES, INC".
- ⊗ = Set 5/8"x30" iron reinforcing pin with plastic cap stamped "HOFFBUHR & ASSOCIATES, INC".
- = Found 5/8" iron pin per F.S.2387, 5845, 5859, & 7431 by Edward A. McGinty unless noted otherwise
- ⊙ = Found 5/8" iron reinforcing pin with plastic cap stamped "HOFFBUHR & ASSOCIATES, INC". per Andrews Place Phase 1
- △ = Set 5/8"x30" iron reinforcing pin with Aluminum cap stamped "HOFFBUHR & ASSOCIATES, INC".

PUE = Easement for public utilities, storm drainage, irrigation, gas, water, electric, telephone, cable television and sanitary sewer, construction and maintenance

P.S.D.E. = Private Storm Drain Easement.

O.R. = Official Records, Jackson County, Oregon

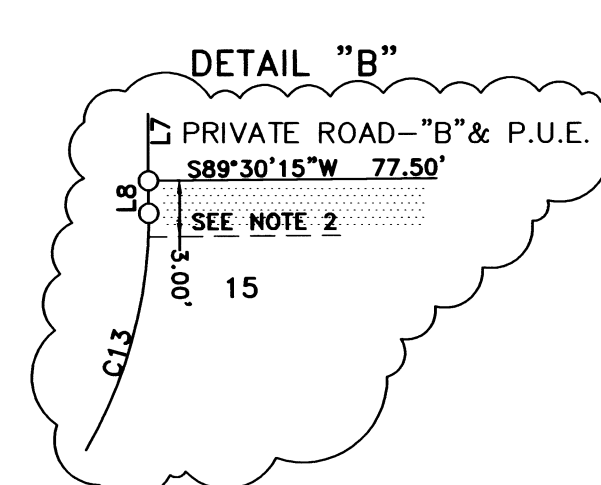
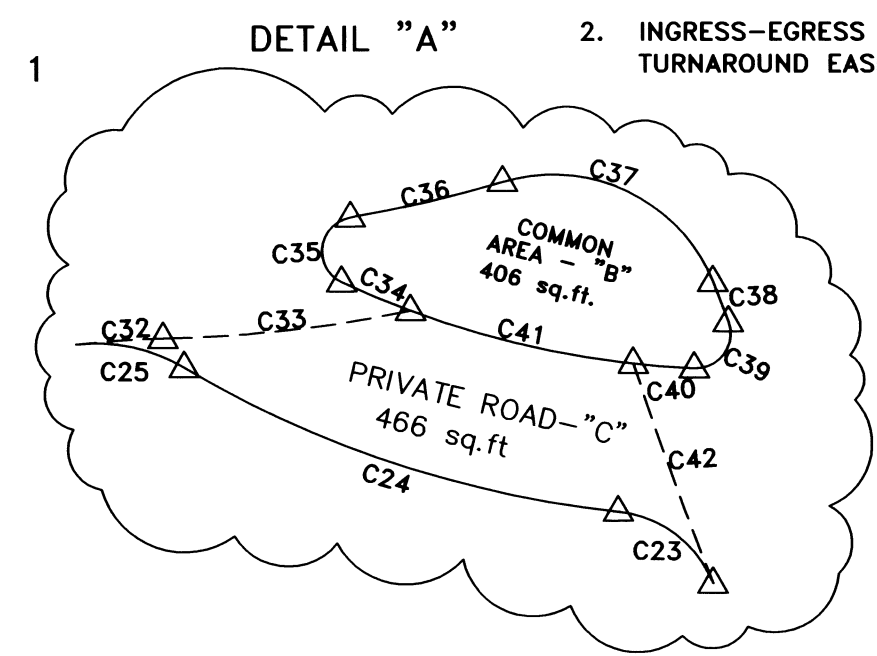
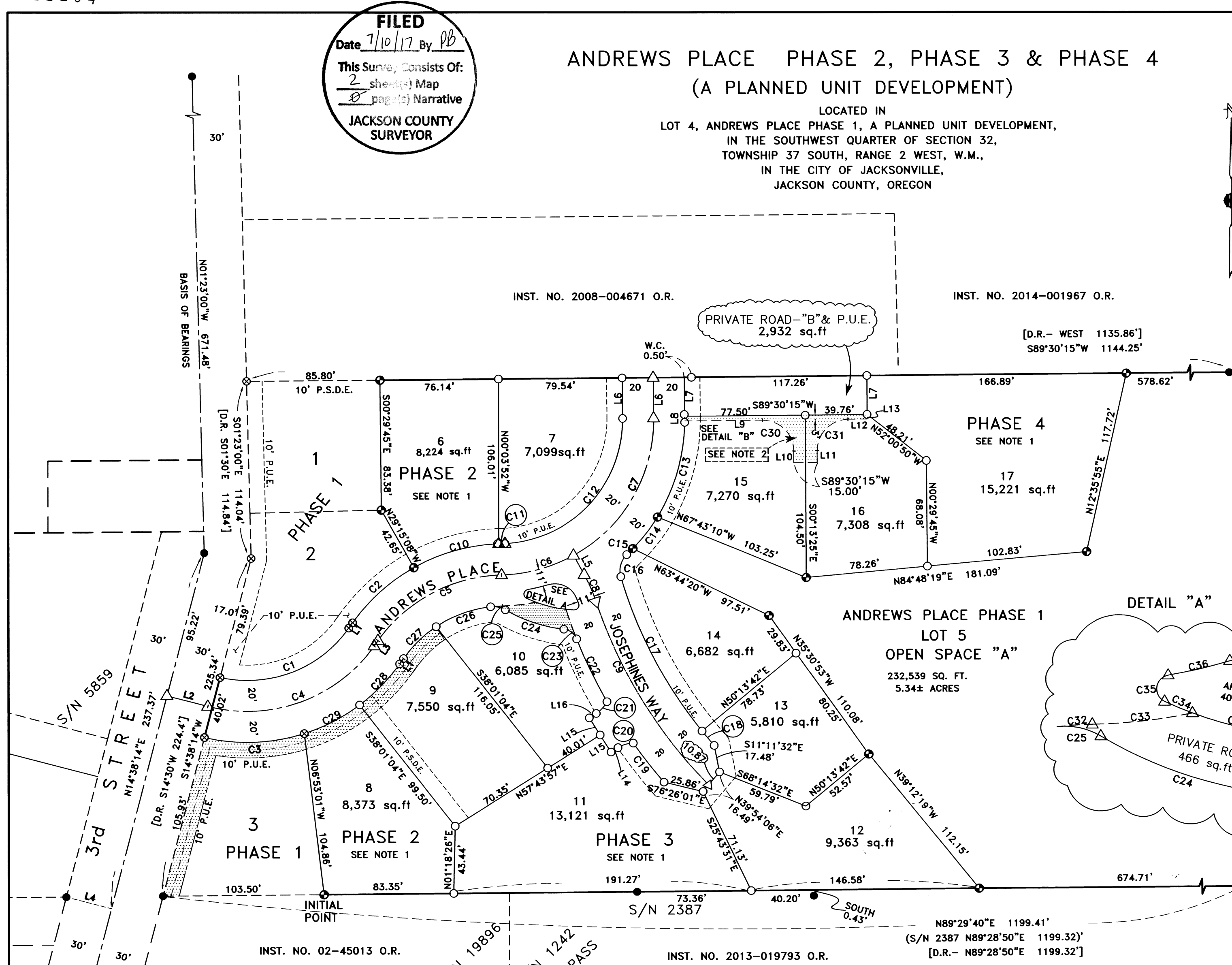
D.R. = Deed Record per Inst. No. 02-42177

S/N = Survey Number

W.C. = Witness Corner

NOTES:

1. PHASE 2 = LOTS 4 THROUGH 7 AND THE ROADS ANDREWS PLACE, JOSEPHINES WAY AND PRIVATE ROAD "C".
 PHASE 3 = LOTS 8 THROUGH 12
 PHASE 4 = LOTS 13 THROUGH 15 AND THE PRIVATE ROAD "B".
2. INGRESS-EGRESS EASEMENT AND EMERGENCY VEHICLE TURNAROUND EASEMENT.



LINE TABLE		
LINE	BEARING	DISTANCE
L1	N35°12'15"E	4.27
L2	S75°21'45"E	27.13
L3	N35°12'16"E	4.27
L4	S75°21'46"E	30.03
L5	S28°57'56"E	14.09
L6	N00°29'45"W	25.99
L7	N00°29'45"W	25.00
L8	N00°29'45"W	0.99
L9	S89°30'15"W	49.89
L10	N00°13'25"W	7.41
L11	S00°03'25"E	7.60
L12	S89°30'15"W	12.37
L13	S00°29'45"E	3.00
L14	S57°43'57"W	5.31
L15	S32°16'04"E	13.00
L16	S57°43'54"W	5.31

CURVE TABLE					
CURVE	RADIUS	DELTA	LENGTH	CHORD BEARING	CHORD DISTANCE
C1	80.00	67°22'38"	94.08	N68°53'34"E	88.75
C2	120.00	25°32'37"	53.50	S47°58'34"W	53.06
C3	120.00	31°02'07"	65.00	N87°44'57"E	64.21
C4	100.00	69°25'59"	121.18	N69°55'15"E	113.90
C5	100.00	53°33'49"	93.49	S61°59'10"W	90.12
C6	100.00	27°44'00"	48.40	N74°54'10"E	47.93
C7	100.00	61°31'50"	107.39	N30°16'07"E	102.31
C8	100.00	10°46'31"	18.81	S23°34'39"E	18.78
C9	305.93	26°14'37"	140.13	S31°18'37"E	138.91
C10	120.00	27°22'08"	57.32	S74°25'58"W	56.78
C11	120.00	00°39'05"	1.36	S88°24'43"W	1.36
C12	80.00	89°15'50"	124.64	S44°08'09"W	112.41
C13	120.00	31°58'02"	66.95	N15°29'22"E	66.09
C14	120.00	12°23'48"	25.96	S37°40'12"W	25.91
C15	120.00	02°39'48"	5.58	N45°11'02"E	5.58
C16	14.00	62°42'08"	15.32	N15°10'52"E	14.57
C17	285.97	22°41'53"	113.29	N27°31'08"W	112.55

CURVE TABLE					
CURVE	RADIUS	DELTA	LENGTH	CHORD BEARING	CHORD DISTANCE
C18	285.97	2°25'21"	12.09	N40°04'45"W	12.09
C19	325.94	5°38'02"	32.05	S37°51'16"E	32.04
C20	19.00	31°23'00"	10.41	N73°25'27"E	10.28
C21	19.00	31°23'32"	10.41	S42°02'11"W	10.28
C22	325.97	07°55'14"	45.06	S25°31'40"E	45.03
C23	10.00	62°17'30"	10.87	S52°42'47"E	10.34
C24	93.00	24°38'20"	39.99	S71°32'23"E	39.89
C25	15.00	37°27'17"	9.81	S77°56'54"E	9.63
C26	80.00	28°59'14"	37.68	N69°49'53"E	37.33
C27	80.00	21°08'02"	29.51	N45°46'24"E	29.34
C28	120.00	17°46'55"	37.24	N44°05'30"E	37.09
C29	120.00	19°14'43"	40.31	N62°36'44"E	40.12
C30	20.00	90°16'20"	31.51	N45°21'35"E	28.35
C31	20.00	89°43'40"	31.32	S44°38'25"W	28.22
C32	80.00	05°26'33"	7.60	N86°02'21"E	7.60
C33	120.00	10°19'57"	21.84	N83°36'08"E	21.81
C34	80.00	04°37'57"	6.47	N67°13'47"W	6.47

CURVE TABLE					
CURVE	RADIUS	DELTA	LENGTH	CHORD BEARING	CHORD DISTANCE
C35	3.00	145°07'58"	7.60	N07°39'13"E	5.72
C36	111.00	07°01'00"	13.59	N76°42'42"E	13.58
C37	15.00	84°52'55"	22.22	S64°21'21"E	20.24
C38	89.00	02°25'07"	3.76	S20°42'21"E	3.76
C39	3.00	111°52'08"	5.86	S36°26'10"W	4.97
C40	80.00	03°48'59"	5.33	N85°43'16"W	5.33
C41	80.00	14°16'03"	19.92	N76°40'45"E	19.87
C42	325.93	03°35'14"	20.41	S19°46'38"E	20.40

REGISTERED PROFESSIONAL LAND SURVEYOR

Darrell L. Huck
 OREGON
 FEBRUARY 4, 1983
 DARRELL L. HUCK
 2023
 Expires 6/30/2017

I certify this plat to be an exact copy of the original
Darrell L. Huck
 SURVEYOR
 16115 ph2 sh2.dwg)
 SHEET 2 OF 2